



GMT MONTHLY MEMBERSHIP PROGRESS REPORT

Results as of: 2/29/2020

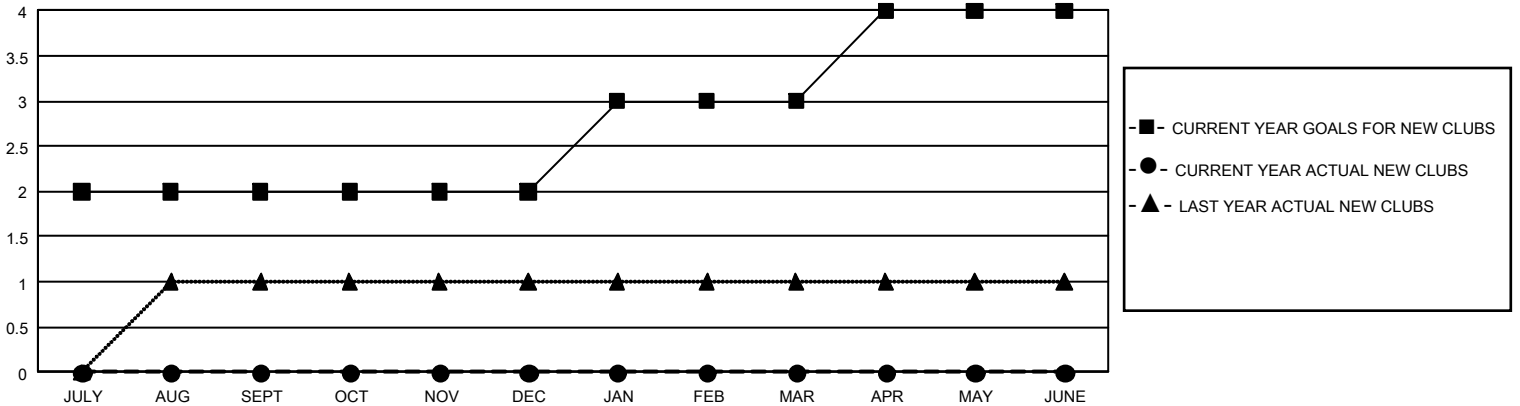
GMT Constitutional Area 7, Group B

GMT: OPEN

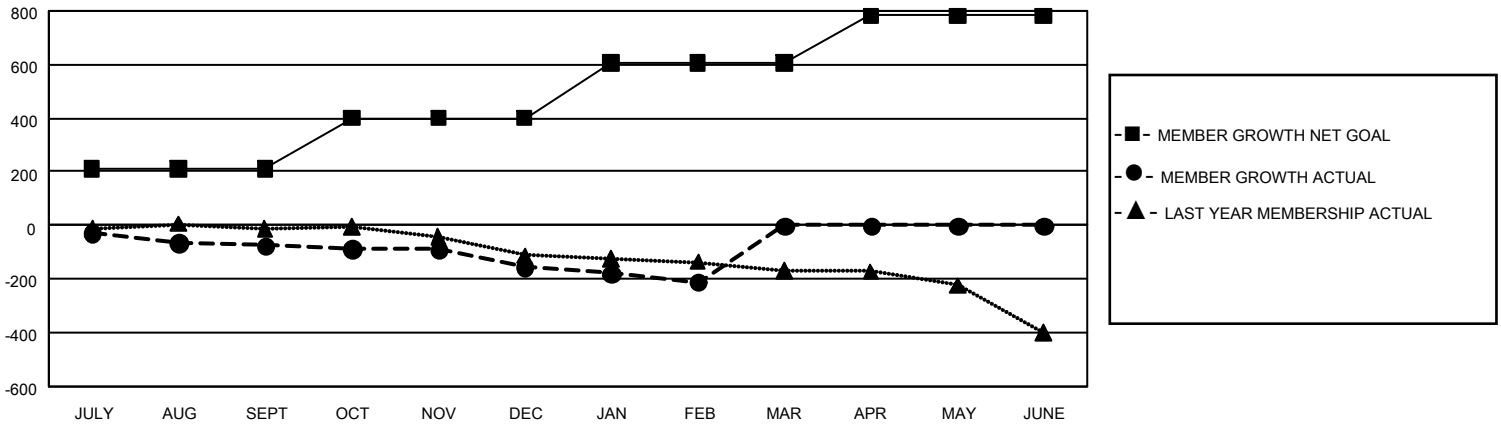
REPORT DOES NOT INCLUDE CLUBS IN UNDISTRICTED AREAS.

Clubs				Members			
RESULTS FOR 2019-2020				RESULTS FOR 2019-2020			
QUARTER	NEW CLUB GOAL	NEW CLUBS	DROPPED CLUBS	QUARTER	MEMBER GROWTH NET GOAL	MEMBER GROWTH ACTUAL	DROPPED MEMBERS ACTUAL (including transfers)
JULY/AUG/SEPT	6	0	1	JULY/AUG/SEPT	633	182	227
OCT/NOV/DEC	0	0	0	OCT/NOV/DEC	570	158	219
JAN/FEB/MAR	3	0	1	JAN/FEB/MAR	618	62	109
APR/MAY/JUNE	3	0	0	APR/MAY/JUNE	525	0	0

GOALS AND ACTUAL NEW CLUBS CUMULATIVE



GOALS AND ACTUAL MEMBERS CUMULATIVE



DROPPED CLUBS: 2	164 CLUBS OF 342 ADDED 1 OR MORE NEW MEMBERS	<u>GENDER DISTRIBUTION</u>	
<u>DROPPED MEMBERS</u>		MALE	6,254 (69.60%)
DECEASED	98	FEMALE	2,732 (30.40%)
CLUB CANCELLED	0	TOTAL FAMILY UNIT MEMBERS 776	
OTHER	455	FAMILY MEMBERS PAYING HALF DUES 393	
TOTAL	553		

[CLICK HERE FOR CUMULATIVE MEMBERSHIP DATA](#)